

ENERGATED

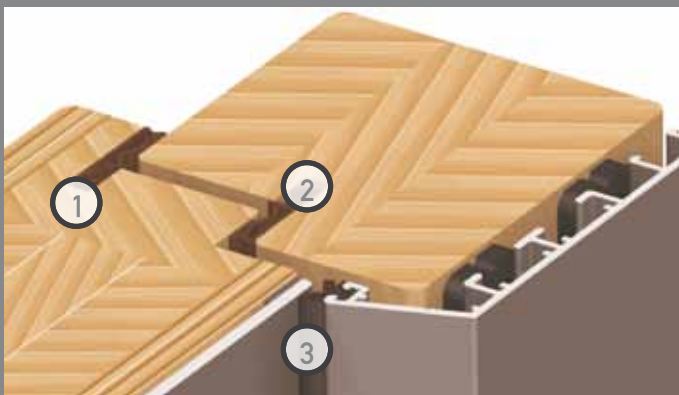
MORE WINDOW – MORE ENERGY – MORE LIFE

أبواب المدخل الرئيسي من الخشب والالمنيوم ▪ نظام موثر للطاقة

WOOD ALUMINIUM · LOW ENERGY SYSTEM · MAIN ENTRANCE DOORS

WOOD ALUMINIUM · LOW ENERGY SYSTEM · MAIN ENTRANCE DOORS

- 1 1 x gasket
all around the door leaf
- 2 1 x gasket
3-sided in the door frame
- 3 1 x gasket
3-sided in the the profile



Triple insulating glass with
 $U_g = 0,5 \text{ W/m}^2\text{K}$

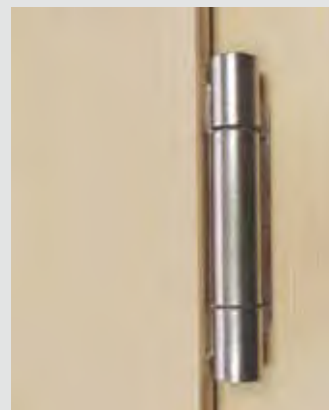
x Fiber glass spacer · Color: black

In case of customer choice is
ornamental glass - glass is in the middle



Triple insulating glass

Load capacity 160 kg
Roll diameter 20 mm
Surface top zinc



Main entrance door hardware

MUPTIBLE POINT LOOKING SYSTEM

Two massive hooks & latch and bolt
Seperate locking plate for the hooks
Surface: Top zinc, resistance class WK1

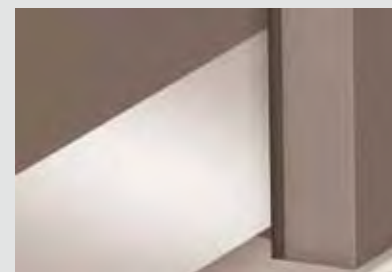
THERMAL BROKEN FLAT THRESHOLD
Outside aluminum · silver EV1 / inside plastic
color: grey · invisible screw fixing

Height adjustable gasket between the door leaf and
threshold for optimal water tightness

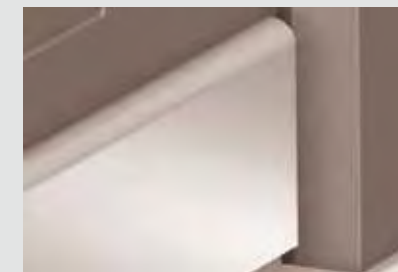


THERMAL BROKEN FLAT THRESHOLD

Triple door hinges



WEATHERBOARD W7
Satin stainless steel F69, flush, width 85 mm



Weatherboard W6
Satin stainless steel F69, profiled, width 107 mm

WOOD ALUMINIUM · LOW ENERGY SYSTEM · MAIN ENTRANCE DOORS
SPECIFICATIONS

A رقائق باب مصنوعة من لوح متعدد الطبقات، مدعمة بإطار خشبي صلب

B واجهات من الخشب الرقائقي مع طبقات تثبيت من الألومنيوم

C بلاستيك مدمج بالألياف فائق الجودة مركب على جانب القفل لتوفير ثبات أفضل

D طبقات تثبيت من الألومنيوم على جانب القفل لتوفير ثبات أفضل

E قلب بناء PUR

A Door leaf made of multilayer board, strengthened with solid wood frame

B Plywood facings with Aluminium stabilization layers

C Integrated high-quality fibre-plastic composite on the lock side for better stability

D Aluminum stabilization layers on the lock side for better stability

E PUR construction core

Wood-aluminium mainentrance door

الخشب الألومنيوم أبواب المدخل الرئيسي

➔ نفاذية حرارية من فراغ الباب $u_p = 0,93 \text{ W/m}^2\text{K}$ (التنوب)

➔ غلاف خارجي من الألومنيوم

➔ درفة الباب:الواح الألومنيوم بسمك 3 مم

➔ حلق الباب: قطاع من الألومنيوم

➔ درفة الباب مصنوعة من لوح متعدد الطبقات، مدعمة بإطار خشبي صلب ومثبتات مدمجة ضد العيوب

➔ عزل حراري ممتاز u_p (حسب الطراز، خشب التنوب) حتى 1,0 وات / $\text{W/m}^2\text{K}$

➔ حشواتان حول قفل ثلاثي النقاط مع مفصلات خاصة ثلاثية الأبعاد قابل للضغط

➔ المتانة: جميع الأبواب التي نقدمها تجتاز اختبار 200.000 دورة فتح وغلق يجري على فترة طويلة

➔ تم الاختبار طبقاً للمعيار DIN-EN

➔ مقاومة للرصاص لمتطلبات السلامة الخاصة وحسب الطلب

➔ تم الاختبار بمعايير عالية على أداة قياسية مخصصة للسلامة ضد السطو

➔ تشكيلة الخشب التنوب والصنوبر والبلوط

➔ Thermal transmittance of the door blank - $u_p = 0.93 \text{ W/m}^2\text{K}$ (Spruce)

➔ ALU Cladding Exterior

➔ Door leaf: Aluminum panel 3 mm thickness

➔ Door frame: Aluminum profile - clipped

➔ Door leaf made of multilayer board, strengthened with solid wood frame and integrated stabilizers against default

➔ Excellent thermal insulation U_d (depending on model, spruce) up to $1.0 \text{ W/m}^2\text{K}$

➔ 2 gaskets all around 3-point locking with 3-dimensional-adjustable special hinges

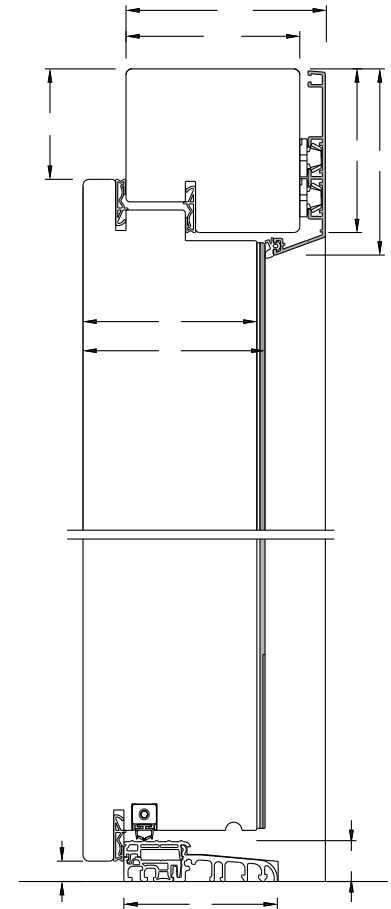
➔ Durable function: All our doors pass 200.000 opening and closing cycles in the long time test

➔ DIN-EN-Norm tested

➔ Bullet-resistant for special safety claims upon request

➔ Considerably tested with a standard tool set to burglary safety

➔ Wood choices: Spruce, larch, oak



XS = special size

S = standard size

L = standard size

XL = special size



Width bis 949 mm
Height bis 1999 mm



Width 950-1150 mm
Height 2000-2300 mm

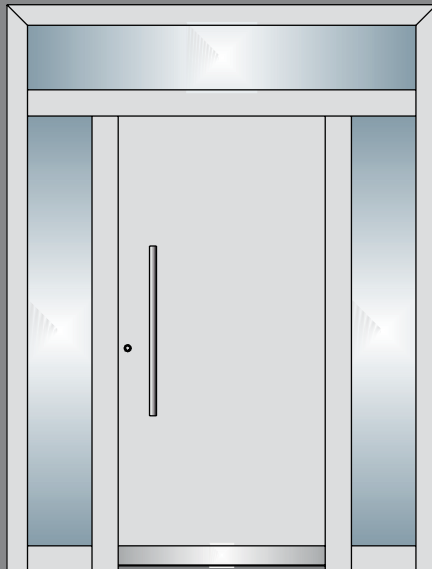


Width 1151-1250 mm
Height 2301-2400 mm

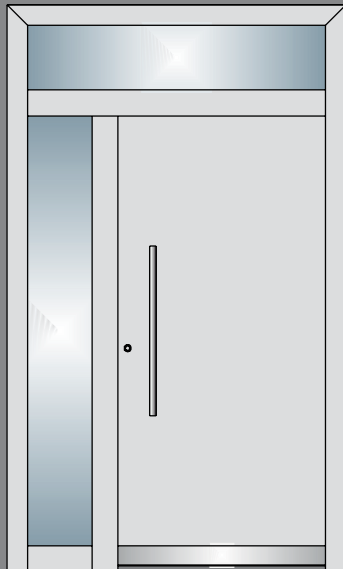


Width 1151-1250 mm
Height 2401-2500 mm

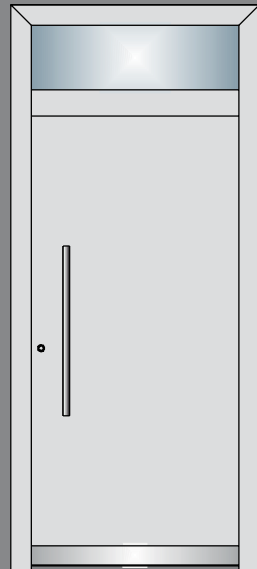
(4 x door hinges, extended locking)



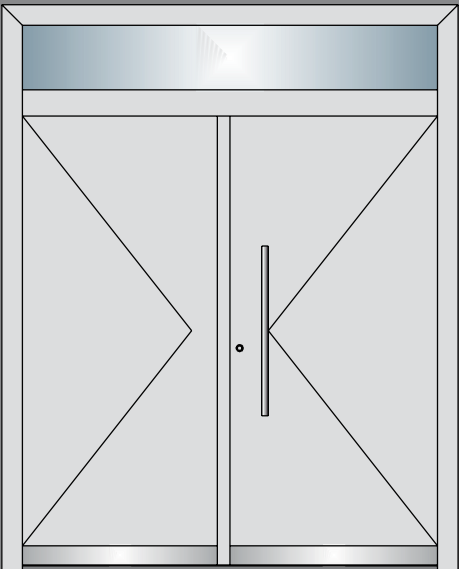
Singel opening door
with skylight & 2 side lights



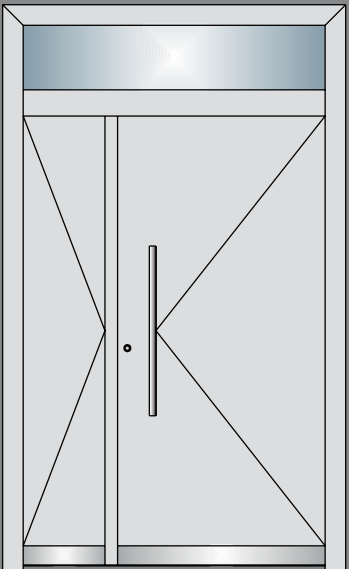
Singel opening door
with skylight & 1 side lights



Singel opening door
with skylight



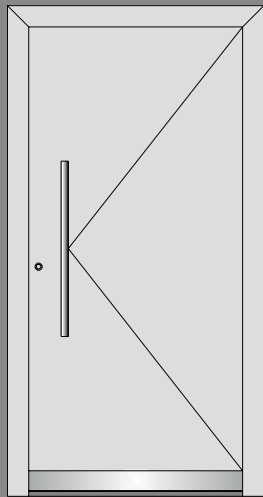
Double opening door- symmetrical
with skylight



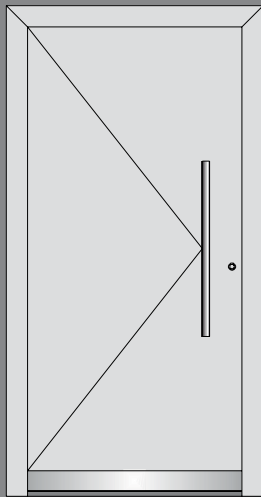
Double opening door - asymmetrical
with skylight

Types & Sizes

Standard: All doors are open inwards - Opening outwards not available



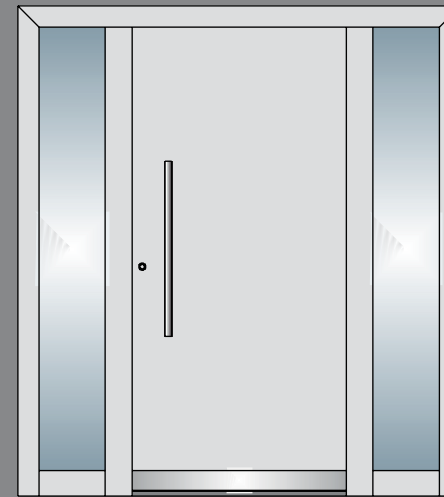
DIN right



DIN Left



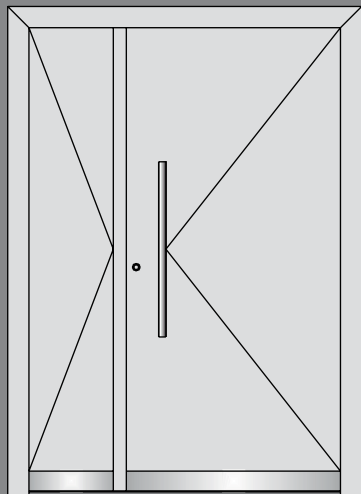
Single opening door with 1 x side light



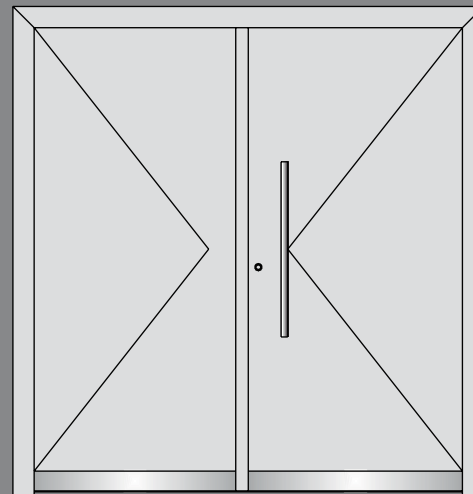
Single opening door with 2 x side lights

ALL OTHER VERSIONS
ON REQUEST

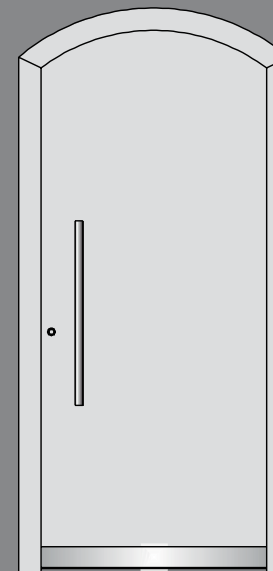
The production in one piece with side light and sky light is possible up to a maximum outer dimension of 2600 x 2600 mm



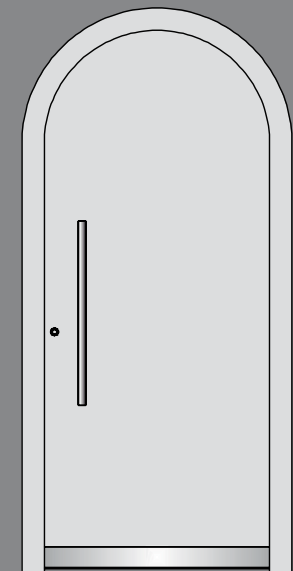
Double opening door - asymmetrical



Double opening door - symmetrical

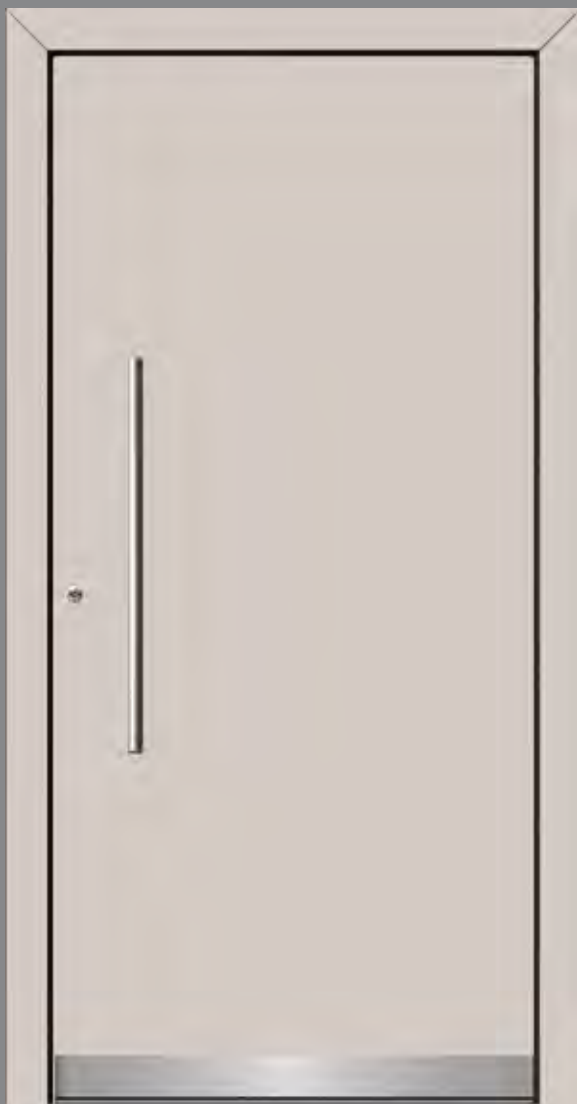


Singel opening door -Round arch



Singel opening door - Segmental arch

A101.1



A101.2



A101.3



A101.4



A105



A106



A107



A107-A



A124



A119



A120



A121



A309



A314

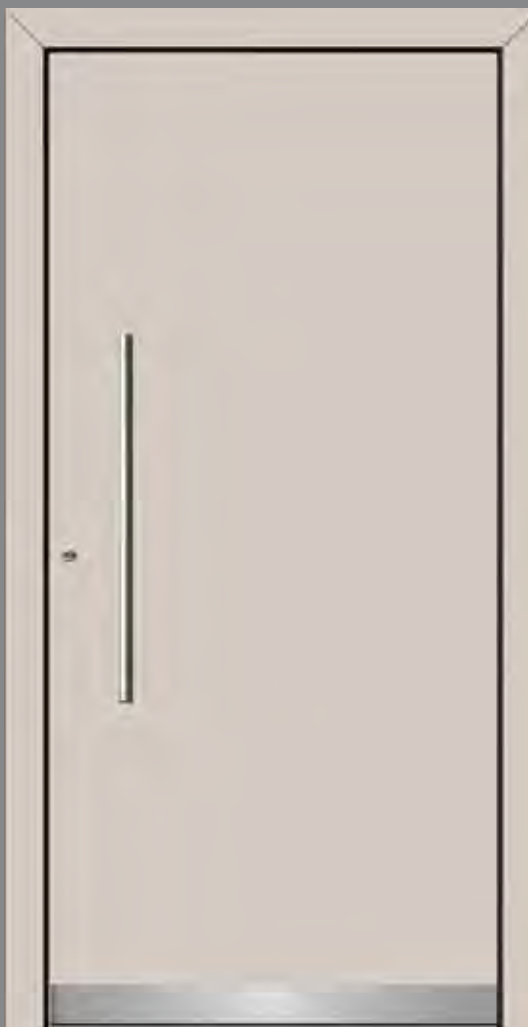


A310



A312

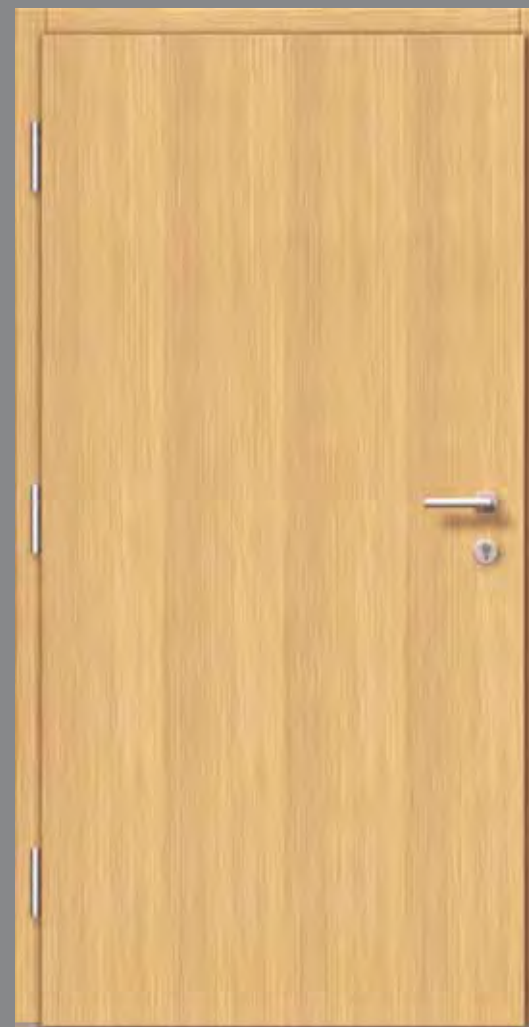




EXTERIOR View: ALUMINIUM



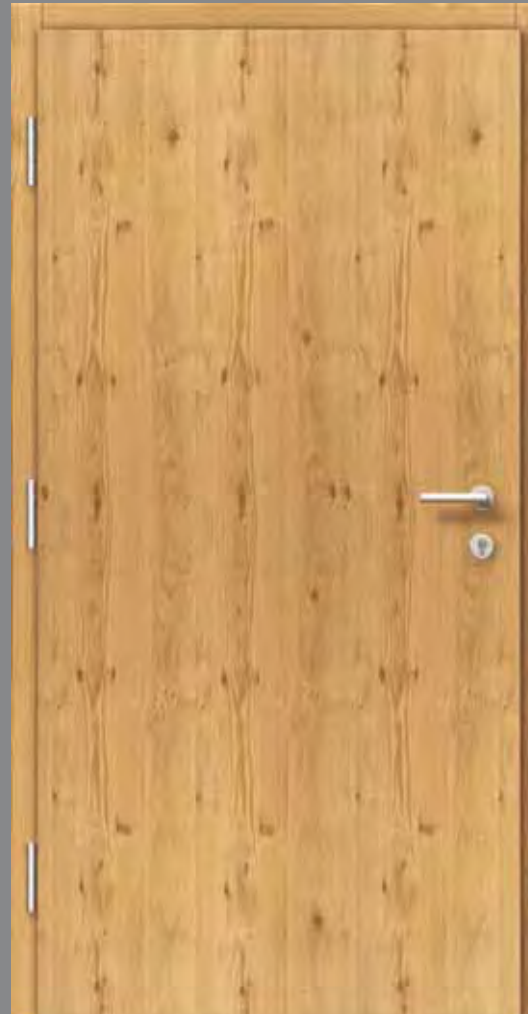
INTERIOR View: SPRUCE - Picea Abies
Standard: vertical veneered



INTERIOR View: OAK
Standard: vertical veneered



INTERIOR View: LARCH
Special version: horizontally veneered



INTERIOR View: OAK knotty
Standard: vertical veneered



Interior View: LARCH knotty
Special version: horizontally veneered



INTERIOR View: SPRUCE - Picea Abies
Special version: horizontal grooves



INTERIOR View: LARCH
Special version: horizontal stainless
steel applications



INTERIOR View: SPRUCE - Picea Abies
Special version:
Profile frames and fillings



INTERIOR View: SPRUCE - Picea Abies
Special version:
Door leaf and frame flush



INTERIOR View: RAL 3004 purple red
Special version: Light cutout



INTERIOR View: RAL Color -white
Special version: Light cutout

WOOD ALUMINIUM · LOW ENERGY SYSTEM · MAIN ENTRANCE DOORS



SPRUCE
Picea Abies



LARCH



OAK



MERANTI

WOOD IS A NATURAL PRODUCT
Wood is a natural product and the surface structure is always individual and your windows and doors are unique. The wood grain is arbitrary and every door is different.
This colors illustration are represented symbolically. Color deviations from the original are depending on the printing conditions.

For interior wood only, not recommended for exterior

Spruce - Picea Abies = Standard delivery time and price - All other types of wood must be requested and the delivery time and price may vary

DECOR PANEL CHOICES



DECOR PANEL:
American Walnut

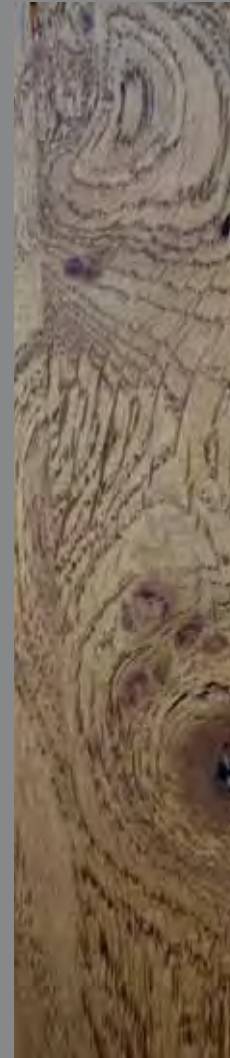


DECOR PANEL:
Teak



DECOR PANEL: Apple

SPECIAL WOOD CHOICES



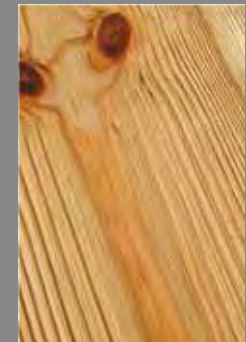
Special Wood:
OAK knotty



Special Wood:
LARCH knotty

Wood is a natural product
Wood is a natural product and the surface structure is always individual and your windows and doors are unique. The wood grain is arbitrary and every door is different.
This colors illustration are represented symbolically. Color deviations from the original are depending on the printing conditions.

RUSTIC LOOK



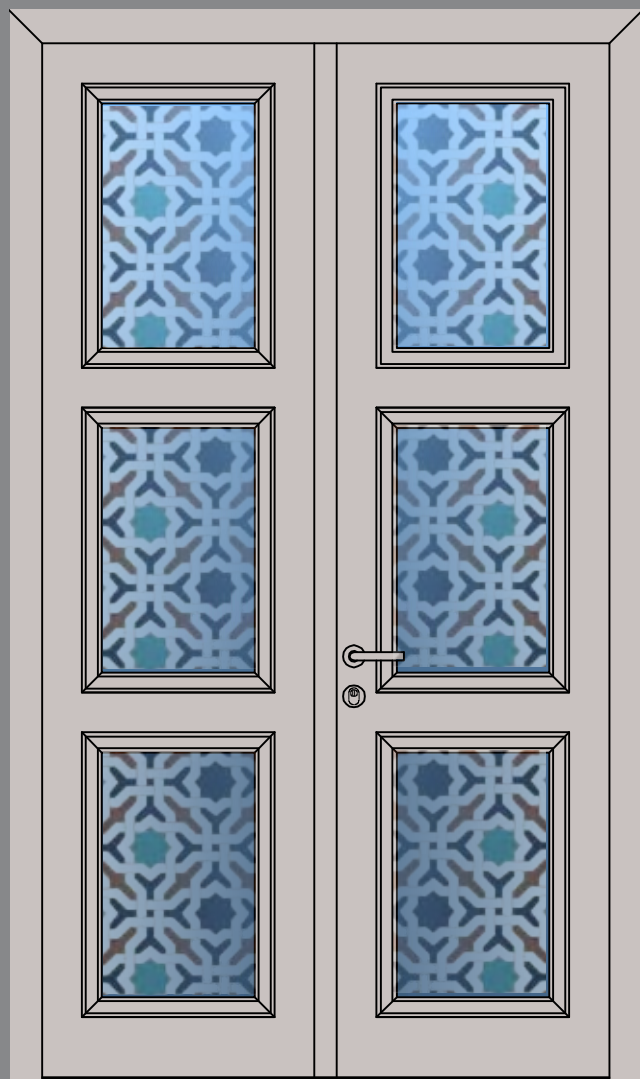
Special
Surface:
Brushed

For interior wood only, not recommended for exterior

Spruce - Picea Abies = Standard delivery time and price - All other types of wood must be requested and the delivery time and price may vary

This colors illustration are represented symbolically.
Color deviations from the original are depending on the printing conditions.

CD 01



CUSTOMER DESIGN

Example for a custom designed main entrance door
pattern ornament designed as digital glass print

Dimensions

Double opening door:

Width 1600 mm - Height 2500 mm

Color: RAL 9006 white aluminum

CD 02

Customer design

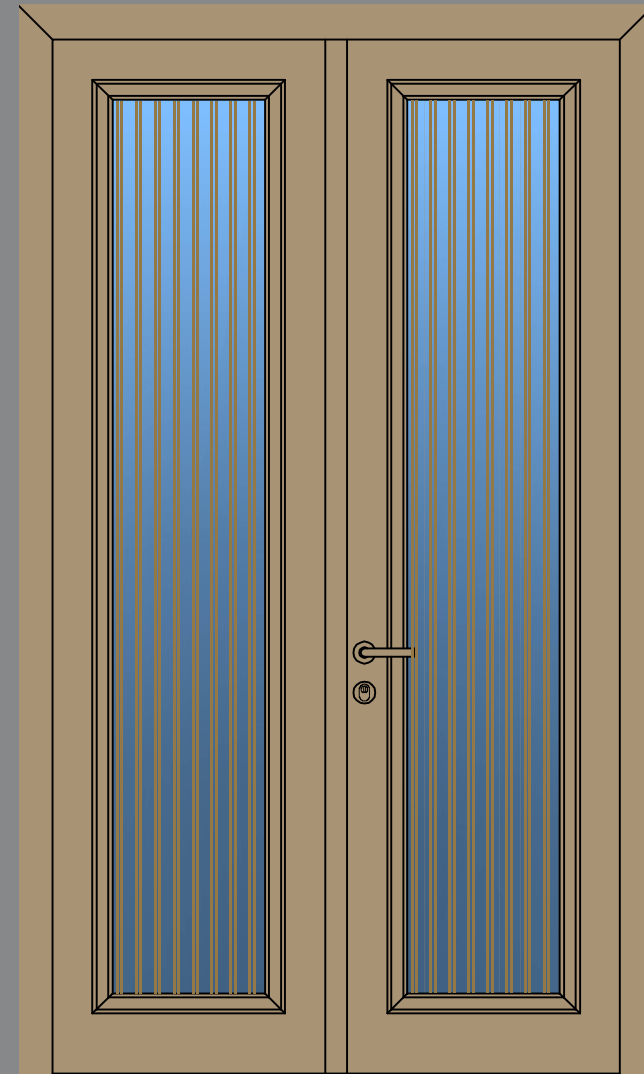
Example for a custom designed main entrance door
fine gold stripes designed as digital glass print

Dimensions

Double opening door:

Width 1600 mm - Height 2500 mm

Color: RAL 1019 grey beige



CD 03



Customer design

Example for a custom designed main entrance door

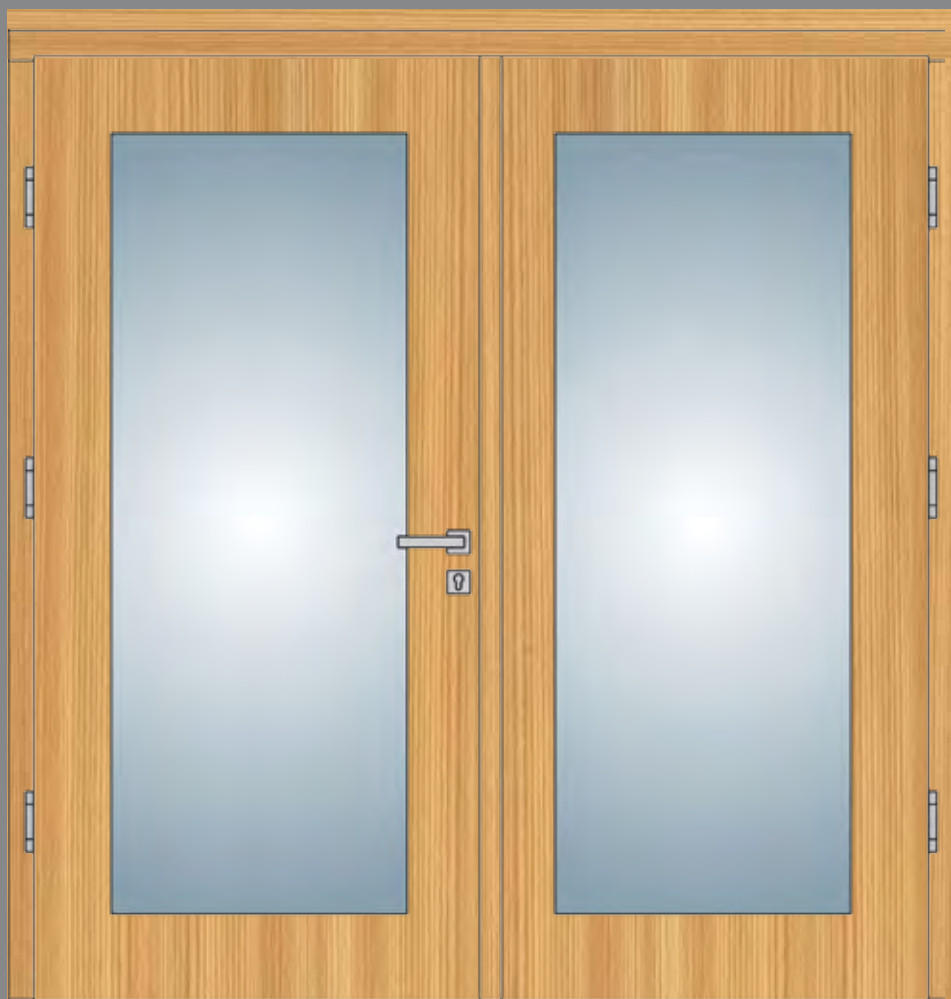
Dimensions

Double opening door:

Width 2200 mm - Height 2350 mm

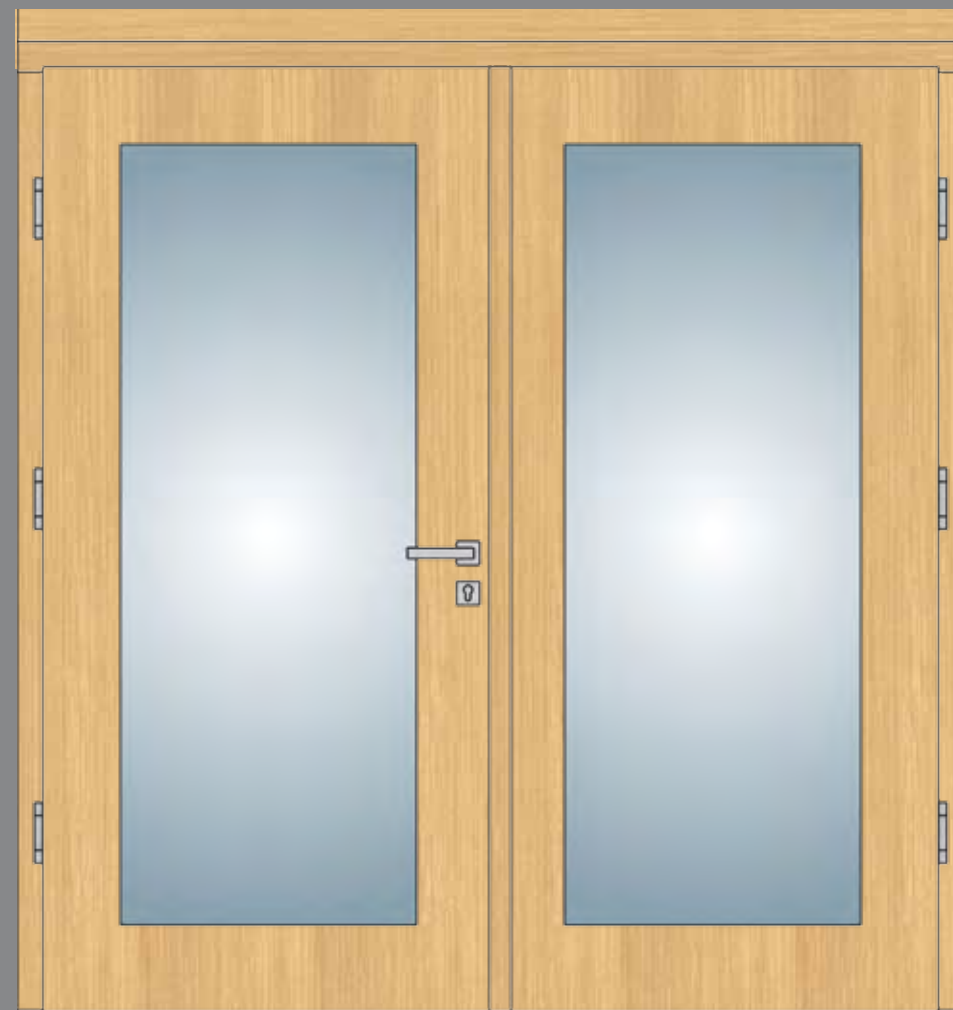
Color: RAL 9006 white aluminum

CD 03.1 INTERIOR



INTERIOR View: LARCH
Standard: vertical veneered

CD 03.2 INTERIOR



INTERIOR View: OAK
Standard: vertical veneered

CD 04



Customer design

Example for a custom designed main entrance door with

Aluminum cut Islamic pattern ornament set before the facade element

Dimensions

Complete element:

Width 4200 mm - Height 4700 mm

Double opening door:

Width 2200 mm - Height 2200 mm

Special color: Eloxal C33 medium bronze



Customer design

Example for a custom designed main entrance door with Islamic pattern ornament designed as digital glass print

Dimensions

Complete element:

Width 4350 mm - Height 6000 mm

Double opening door:

Width 2200 mm - Height 2500 mm

Special color: Eloxal C0 natural metallic



ENERGATE

اختيار جيد

تضمن الهندسة الألمانية أفضل تصميم وجودة وراحة واستخدام مستدام.

إن قيم منتجاتنا مثبتة، فلدينا مواقع الاختبار الخاصة بنا ويتم رصد النتائج وتقييمها مع جامعة الملك سعود، كلية التقنية بالرياض و SEC و SEEC و SASO والنتائج رائدة.

أظهرت هذه التجارب التي نرصدها أن نوافذ وأبواب ENERGATE تساعد في خفض تكاليف الطاقة (طاقة التبريد) بما يصل إلى 80 في المئة. منتجاتنا تلبي جميع متطلبات برنامج العزل الإلزامي وفقاً للمطلوب من الشركة السعودية للكهرباء وأحدث قانون للبناء السعودي SBC601. وهناك ميزة أخرى تتمثل في الحصول على المزيد من الراحة في منزلك. أصبح تبريد الغرف أكثر سهولة وتبقى درجة الحرارة مستقرة. وبذلك يتم استخدام طاقة تبريد أقل. وبالإضافة إلى ذلك، فإن جميع النوافذ مضادة تماماً للغبار. يرجى التواصل معنا للحصول على استشارات لمشروعك. تساعد هندسة المشروعات والإشراف على التركيب وخدمات التدريب على المنتجات لدينا على ضمان كون الغلاف الخارجي للمبنى معزولاً حرارياً وستكون راضياً تماماً مع أبواب ونوافذ ENERGATE.

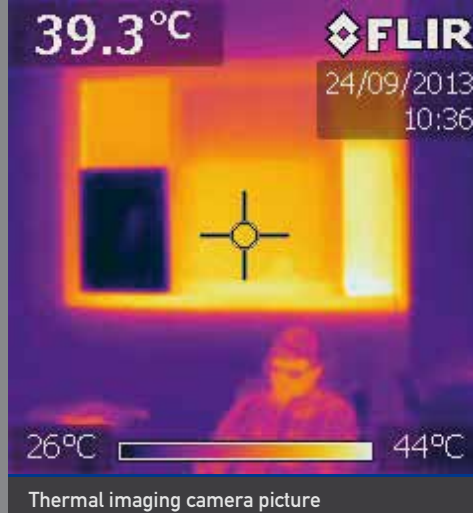
A good choice

German engineering guarantees best design, quality, comfort and longevity.

Our products values are proved, we have our own testing terrains, the results are monitored and evaluated with King Saud University, Riyadh Technical College, SEC, SEEC, SASO and the results are pioneering.

These tests monitored by us showed that ENERGATE windows and doors help to reduce your energy costs (cooling energy) up to 80 percent. Our products fulfill all requirements of the mandatory insulation program as required from Saudi Electricity Company and the latest Saudi Building Code SBC601. A further benefit is that you will gain more comfort in your house. Rooms are much easier to cool down and temperature will remain stable. Much lower cooling power is needed. Furthermore all windows are 100 percent dust proofed. Please talk to us for consultancy for your project.

Our project engineering, installation supervision and product training services, will help to ensure that your building envelope is thermal bridge free and you will be completely satisfied with ENERGATE windows & doors.



A visible proof:

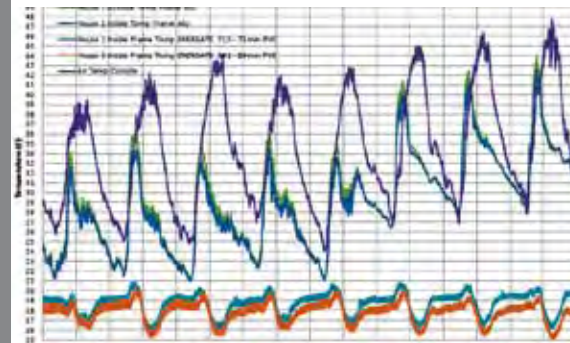
ENERGATE window

(Dark colored window = low temperature ~26 °C)

vs.

Double glazed standard windows

(light colored window = low temperature ~44 °C)



- 80%

ENERGY CONSUMPTION
approved by Saudi Electricity Company

Test report - Results of the test site in Riyadh

تقرير الاختبار - الرياض

		House 1	House 2	House 3
1	Insulation class	No insulation (KSA standard until 2013)	1,2 - 1,5 W/m ² K	0,5 - 0,7 W/m ² K
2	Power consumption	79.2 kWh	58.4 kWh	46.2 kWh
	Indoor temperature	22.3 °C	20.9 °C	18.4 °C
3	Calculated electrical energy demand based on actual metered electrical power consumption and leveled interior temperatures	100%	49.9%	79.6%

Test report - Test side in Riyadh

تقرير الاختبار - الرياض

NO DUST ✓
NO HEAT ✓
NO COLD ✓
NO NOISE ✓



- NO DUST ✓
- NO HEAT ✓
- NO COLD ✓
- NO NOISE ✓

BEST QUALITY WINDOWS & DOORS TECHNOLOGY

SAUDI ELECTRICITY COMPANY APPROVED THERMAL INSULATION

ENERGATE

المكتب:

Office: Riyadh

Windows and Doors Department

King Abdullaziz Road Exit 5, Nafal Area

P.O.Box: 355798 · 11383 Riyadh · KSA

Opposite to STC Showroom · Riyadh 11578 · KSA

Email: sales@energate.com ·  ENERGATE_KSA

WWW.ENERGATE.COM

For project consulting call +966 53 794 8372

مركز البيع:

Point of Sale: Hail +966 54 316 2222

+966 50 515 9625

+966 54 911 4122

مركز البيع:

Point of Sale: Buraydah +966 54 092 2255

+966 56 356 6222

مركز البيع:

Point of Sale: Jedda +966 54 570 8000

Contact via WhatsApp welcome



نحتفظ بالحق في إجراء التعديلات التقنية.
قد تختلف مواصفات المنتج في الطلبات الخاصة.
مقاطع النوافذ هي لأغراض التوضيح فقط وليست أبعادها مرجعية
لأسباب فنية، الألوان التي تظهر في هذه الصفحات ليست مرجعية.
تعتمد اختلافات الألوان عن الأصل على ظروف الطباعة.

We reserve the right to make technical changes,
Product specification at the customers order may vary.
Window cutting sections are not to scale and for illustration purposes only.
For technical reasons, the colors shown on these pages are not authoritative.
Color deviations from the original are depending on the printing conditions.