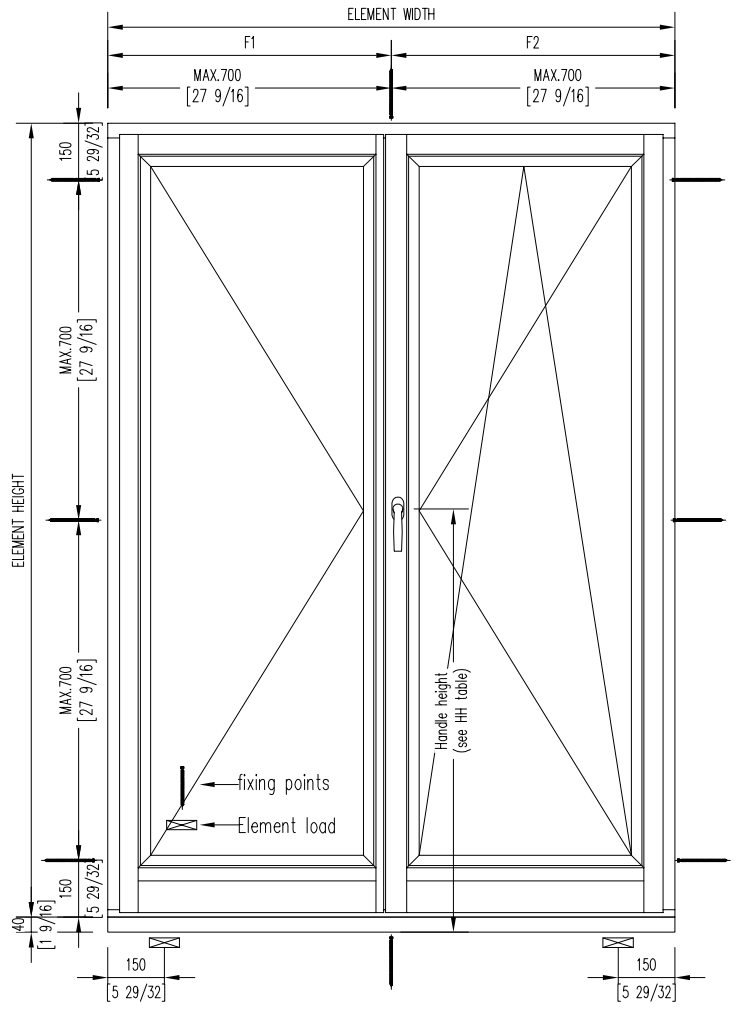
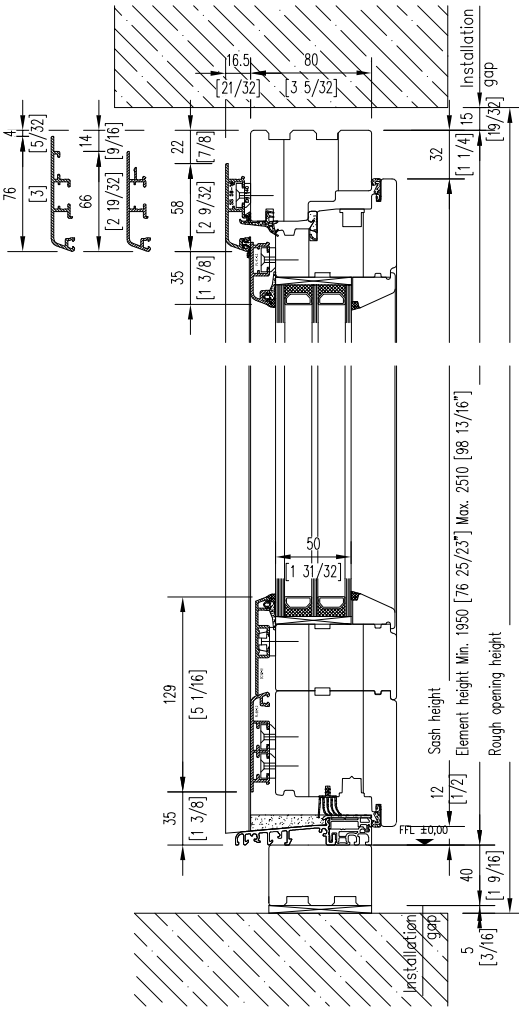


1.104

PATIO DOORS with flat threshold
double french opening swinging door

EN963 Wood - Aluminium



| | |
|---|-----------------------------|
| System: | ENERGATE 963[+] |
| ENERGATE product type: | 1.104 |
| Security level: | Basic |
| Standard handle: | Atlanta F1 (silver) |
| Shaft length 7x7x35mm (17/64" x 1.7/64" x 1 3/8") Screws M5 x 50mm (M5 x 1 31/32") | |
| Sash weight (max. kg) | 150 kg |
| Minimum & maximum measurements: | Information at the drawing. |
| Attention: Minimum and maximum dimensions can not be combined For exact information see ENERGATE size application diagram (separate page) Maximal sizes always deponed on weight are of the choosen glass. The glass weight is always noted on the product data sheet. | |

